



## Evaluation of Metastasis Inhibition by ABD-IL-2 Compared to Human IL-2 in a Breast Cancer Mouse Model

Maryam Teimouri<sup>1,2</sup>, Ahad Muhammadnejad<sup>3</sup>, Mir Saeed Yekaninejad<sup>4</sup>, Alireza Razavi<sup>1\*</sup>, Gholam Ali Kardar<sup>2,5\*</sup>

<sup>1</sup>Department of Immunology, School of Public Health, Tehran University of Medical Sciences, Tehran, Iran;

<sup>2</sup>Immunology Asthma and Allergy Research Institute, Tehran University of Medical Sciences, Tehran, Iran;

<sup>3</sup>Cancer Research Center, Cancer Institute of Iran, Tehran University of Medical Sciences, Tehran, Iran;

<sup>4</sup>Department of Epidemiology and Biostatistics, School of Public Health, Tehran University of Medical Sciences, Tehran, Iran; <sup>5</sup>Department of Medical Biotechnology, School of Advanced Technologies in Medicine, Tehran University of Medical Sciences, Tehran, Iran

### ABSTRACT

**Background:** Interleukin-2 (IL-2) is a well-known cytokine that plays a crucial role in stimulating immune cells, including natural killer (NK) cells and cytotoxic T cells. It has been studied as an immunotherapy for a variety of diseases, including cancer. However, due to its short serum half-life, high doses of IL-2 are required which can result in systemic toxicities like capillary leak syndrome.

**Objective:** To demonstrate the enhanced antitumor efficacy of Albumin Binding Domain-conjugated IL-2 (ABD-IL-2) at a lower dose compared to IL-2.

**Methods:** IL-2 and ABD-IL-2 were purified using Ni-NTA resin with a histidine sequence added to their C-terminal region for purification purpose. Peripheral blood lymphocytes were stimulated with IL-2 and ABD-IL-2 to assess their function. 4T1 cells were injected into BALB/c mice to establish a breast cancer model with metastasis evaluated in the lungs.

**Results:** Both recombinant proteins significantly stimulated T lymphocyte proliferation compared to the negative control ( $P=0.000$ ,  $P=0.001$ ). Administration of both proteins reduced the size of isolated tumors in the breast cancer mouse model. The control group had more nodules and larger lung metastatic centers ( $P=0.000$ ). Metastasis to secondary lymphoid organs occurred only in the control group.

**Conclusion:** By using ABD-IL-2 at a one-third concentration compared to IL-2, we aimed to reduce administration toxicity associated with high doses of IL-2 in immunotherapy. This approach shows potential for improving IL-2-based treatments while minimizing adverse effects.

**Keywords:** Interleukin-2, Tumor, Metastasis, Breast Cancer

\*Corresponding author:

Alireza Razavi,  
Department of Immunology,  
School of Public Health, Tehran  
University of Medical Sciences,  
Tehran, Iran

Email: [razavial@tums.ac.ir](mailto:razavial@tums.ac.ir)

Cite this article as:

Teimouri M, Muhammadnejad A, Yekaninejad MS, Razavi AR, Kardar GA. Evaluation of Metastasis Inhibition by ABD-IL-2 Compared to Human IL-2 in a Breast Cancer Mouse Model. *Iran J Immunol.* 2024; 21(4):294-301, doi: 10.22034/iji.2024.103157.2819.

Received: 2024-06-27

Revised: 2024-09-17

Accepted: 2024-09-18

## INTRODUCTION

Cancer is defined as uncontrolled cell growth with metastasis being the main cause of cancer-related deaths (1). Breast cancer is the most common form of cancer and the second leading cause of cancer-related fatalities among women. In approximately 20-30% of cases, the cancer spread to other parts of the body, including the brain, liver, lungs and bones (2). While treatments like chemotherapy, radiotherapy, and surgery to remove tumor tissue are used to treat this cancer, there is currently no effective treatment for metastatic cases (3).

Cytokine-based immunotherapy is a promising field in cancer treatment because cytokines regulate the responses of the host immune system against tumor cells and induce programmed cell death in cancerous cells, through anti-proliferative and apoptosis induction. Predominantly, recombinant human interleukin-2 (rhIL-2) is applied as an immunotherapy in research and clinical studies (4-6).

Interleukin 2 is a cytokine with a molecular weight of 15.5 kD, primarily produced by TCD4<sup>+</sup> lymphocytes in response to antigen stimulation (7). The rhIL-2 protein, commercially available as Proleukin (Aldesleukin), is used in the immunotherapy of cancers, such as melanoma and renal cancer (8-10), but Proleukin has a short half-life (13 to 80 minutes) after injection into the blood, necessitating high doses (HD) for effectiveness. These high doses are often linked to severe side effects (11, 12).

There are various strategies to increase the half-life of therapeutic proteins, including conjugation of the target protein to the albumin-binding domain (ABD) (13, 14). ABD is naturally present in the G protein of streptococcal strains. The G protein has two parts with three domains in each part. The intracellular part binds to the albumin while the extracellular part binds to the FC region of IgG. Among the three domains that bind to albumin, the C-terminal domain known

as G148-ABD3 has been the focus of most studies. ABD3 has a high binding capacity to albumin ( $K_d \sim 4nM$ ) and is physically and chemically stable (13, 15, 16). The half-life of several drug proteins is increased through binding to the G148- ABD3 sequence, including the HER2-binding Fab fragment of the trastuzumab drug (17), Granulocyte-colony stimulating factor (GCSF) (18), human TNF-related apoptosis-inducing ligand (hTRAIL) (19), Interferon  $\alpha$  (20), and Interleukin 15 (21). In 2016, Dr. Kardar and his colleagues demonstrated that in BALB/c mice, the half-life of rhIL-2 protein increased from  $46 \pm 0.2$  minutes to  $150 \pm 1.3$  minutes, three times higher after conjugation with ABD without affecting its biological activity (22). Building upon this research, the current study aimed to enhance the half-life of IL-2 by conjugating it to albumin binding domain (ABD) The study showed improved antitumor activity of IL-2 and ABD-IL-2 along with inhibition of metastasis in the 4T1 breast cancer model. this findings suggest potential for further exploration in clinical trial studies.

## MATERIAL AND METHODS

### *Strain and Plasmid Construction*

Amplification of the rhIL-2 and ABD-rhIL-2 gene fragments available in the project laboratory was performed using specific primers that contained the *NdeI* and *XhoI* restriction sites. The PCR products were then digested with *NdeI* and *XhoI* enzymes and ligated into the pET26b+ plasmid. PCR reactions were performed using Taq polymerase as follows: 95°C for 5 min, 94°C for 30 s, 50°C for 30 s, and 72°C for 9 min repeated for 35 cycles, with a final extension at 72°C for 5 min. The rhIL-2 and ABD-rhIL-2 genes were transformed into *E. coli* DH5 $\alpha$  competent cells using CaCl<sub>2</sub> and heat shock treatments. The cloned bacteria were then cultured in Luria broth (LB) containing 50  $\mu g/ml$  kanamycin at 37°C overnight/with agitation at 180 rpm. Each plasmid was

extracted using a plasmid extraction kit (GTP, Iran) and purified using a plasmid purification kit (Biobasic, USA).

#### *Expression of rhIL-2 and ABD-rhIL-2*

*Rosetta* BL21 was used for periplasmic expression of rhIL-2 and ABD-rhIL-2 as outlined above. The overnight culture was added to 1 liter of culture media with the same antibiotic concentration and incubated at 37°C/250 rpm until the absorbance of bacteria at 600 nm reached 0.6-0.8. Expression was then induced with 1mM IPTG, and bacteria were harvested 4 and 6 hours post-induction at 37°C.

#### *Periplasmic Extraction of rhIL-2 and ABD-rhIL-2*

Protein extraction was carried out using the osmotic shock method. Cell pellets were resuspended in 25 ml of a hypertonic solution (30 mM Tris, 20% w/v sucrose, 1mM EDTA, pH 8.0) and incubated at 4 °C for 30 min. After Centrifugation at 10,000 ×g for 5 min, 25 ml of a hypotonic solution (5 mM MgSO<sub>4</sub>) was added. The supernatants from both the hypertonic and hypotonic solutions were combined and dialyzed against PBS1X at 4 °C for overnight.

#### *Purification of rhIL-2 and ABD-rhIL-2*

1 ml of 50% Ni-NTA slurry (Qiagen, England) was added to clarified cell lysate and incubated for 3 h at room temperature with gentle shaking. The lysate-Ni-NTA mixture was then loaded onto a column. Washing steps were performed with 10 ml of wash buffer (50 mM NaH<sub>2</sub>PO<sub>4</sub>, 300 mM NaCl, 20 mM Imidazole, PH 8.0). The rhIL-2 or ABD-rhIL-2 was eluted ten times with 0.5 ml of an elution buffer (50 mM NaH<sub>2</sub>PO<sub>4</sub>, 300 mM NaCl, 500 mM Imidazole, PH 8.0). The eluates were pooled and protein quantification was performed using the Bradford assay.

#### *Bioactivity Assay of rhIL-2 and ABD-rhIL-2 In Vitro*

To analyze the specific function of purified

rhIL-2 and ABD-rhIL-2, a proliferation assay was conducted on lymphocytes isolated from peripheral blood mononuclear cells (PBMCs). Heparinized peripheral blood was obtained from a healthy volunteer. PBMCs were isolated using a Ficoll solution (Sigma, USA). After centrifugation at 1500g for 20 minutes at room temperature, the PBMCs layer was located beneath the plasma layer. The PBMCs were washed and then resuspended in RPMI-1640 medium containing a 1X penicillin-streptomycin antibiotic solution and 10% fetal bovine serum (FBS). The next day, peripheral blood lymphocytes were collected from the non-adherent cell population and cultured in a 96-well plate. Each well received  $5 \times 10^5$  cells in a complete medium, resulting in a total volume of 100 µl per well. The cells were treated with three distinct concentrations of 100, 200, and 400 ng/ml for both rhIL-2 and ABD-rhIL-2, in triplicate. Additionally, 1 µg/ml of phytohemagglutinin (PHA) and 50 ng/ml of phorbol-12-myristate-13-acetate (PMA) were included as positive controls, while the negative control group was treated with medium devoid of any mitogen. The cells were incubated at 37°C in a 5% CO<sub>2</sub> atmosphere for a duration of 72 hours. After incubation period, 10 µl of a 5 mg/ml MTT (3-(4, 5-dimethylthiazol-2-yl)-2,5-diphenyl-2H-tetrazolium bromide) solution (Sigma, USA) was introduced, and the cells were further incubated for an additional 4 hours. Subsequently, 100 µl of dimethyl sulfoxide (DMSO) was added as a solvent, and the optical density of the cells was measured at 595 nm after 24 hours.

#### *Mouse Tumor Model*

Twelve female BALB/c mice, aged 6-8 weeks, were obtained from the Pharmacology Animal Lab at Tehran University of Medical Sciences (TUMS), Tehran, Iran. The animals were housed and treated in accordance with protocols approved by the Animal Care Committee of Tehran University of Medical Sciences. Briefly, the 4T1 mouse breast cancer cells were cultured in RPMI medium

supplemented with 10% FBS. A total of  $5 \times 10^5$  4T1 cells, suspended in 100  $\mu$ l of PBS, were subcutaneously injected into the third mammary fat pads on the right side of each mouse. The mice were divided into three groups, each containing of four mice: (1) the ABD-rhIL-2 group, (2) the rhIL-2 group, and (3) the negative control group, which received no treatment.

#### Animal Treatment Procedure

On the 13<sup>th</sup> day after tumor cell inoculation, BALB/c mice were intraperitoneally (i.p.) dosed with 0.3  $\mu$ g of ABD-rhIL-2 and 1  $\mu$ g/ml of rhIL-2. The same treatment was administered on days 17, 22, 24, and 27. Following treatment, the tumor area was monitored every 3 days with a caliper. Tumor size was measured twice daily and calculated using the formula  $\text{length} \times (\text{width})^2 \times 0.5$ . Mice were sacrificed on the day 28. The mice in the treatment group received PBS as a vehicle control.

#### Histopathological Analysis

The isolated lungs from mice were fixed in 10% formalin and stained using the H&E method. The numbers and diameters of micro-metastatic nodule in lung tissues were recorded in 200-micrometer thickness by using a digital camera and analyzed with ImageJ. Five histological slides, each 5-micrometers thick, were randomly selected from sections at 500-micrometer interval for microscopic examination.

#### Statistical Analysis

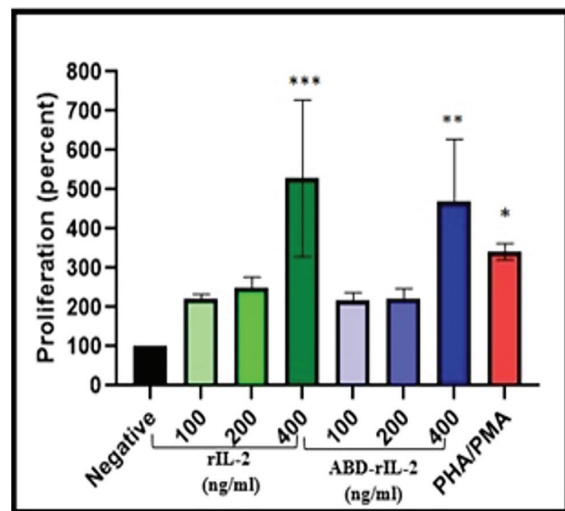
Statistical analysis was conducted using GraphPad Prism 8.0 and SPSS 23. The normality of the data was assessed with the One-Sample Kolmogorov-Smirnov test, which indicated a lack of normal distribution ( $P=0.071$ ). Subsequently, one-way analysis of variance (ANOVA) was employed to compare the means across different groups. The Tukey test was then used as the post-hoc analysis to evaluate all group comparisons. A significance level of  $P<0.05$  was forest to

determine statistical significance.

## RESULTS

### *Proliferative Effect of rhIL-2 and ABD-rhIL-2 on Lymphocytes*

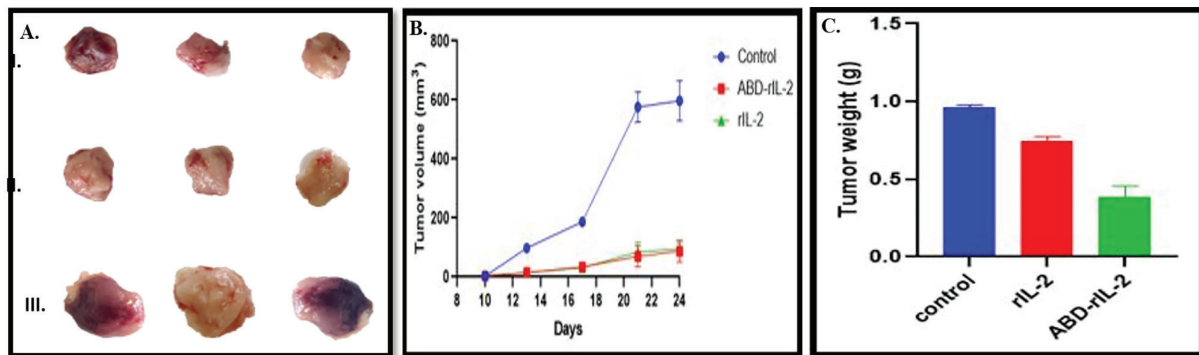
Both rhIL-2 and ABD-rhIL-2 induced lymphocyte proliferation. However, the highest concentration (400 ng/ml) of both rhIL-2 ( $P<0.001$ ) and ABD-rhIL-2 ( $P<0.000$ ) had a significant effect on lymphocyte proliferation. The comparison between rhIL-2 and ABD-rhIL-2 groups showed that the proliferation in these two groups was not significantly different (Fig. 1).



**Fig. 1.** The effect of recombinant human Interleukin 2 (rhIL-2) and Albumin Binding Domain-conjugated rhIL-2 (ABD-IL-2) on human peripheral lymphocytes by MTT assay. The negative group did not have any treatment and the positive group was treated with PHA/PMA mitogens. The OD results were converted to the percent of proliferation compared to negative control. Data was presented as Mean $\pm$ SD. \* $P<0.05$ , \*\* $P<0.001$  and \*\*\* $P<0.0001$ .

### *rhIL-2 and ABD-rhIL-2 Inhibit Tumor Growth in Mice*

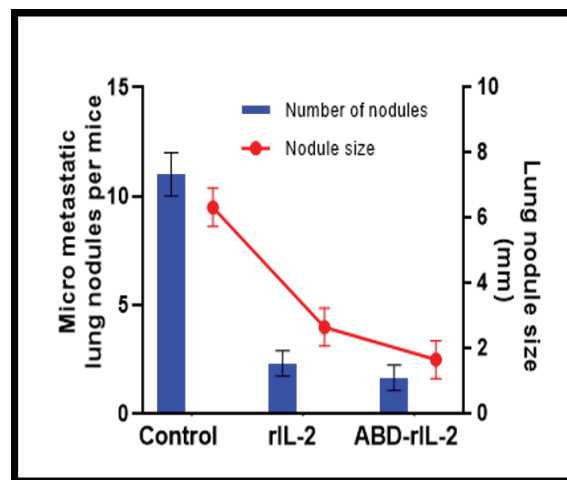
The tumor weight of mice treated with rhIL-2 and ABD-rhIL-2 was significantly lower than that of the control group ( $p=0.0006$ ) (Fig. 2B). Additionally, the tumor volume of mice treated with rhIL-2 and ABD-rhIL-2 was significantly reduced compared to the control group ( $P=0.0001$ ) (Fig. 2C).



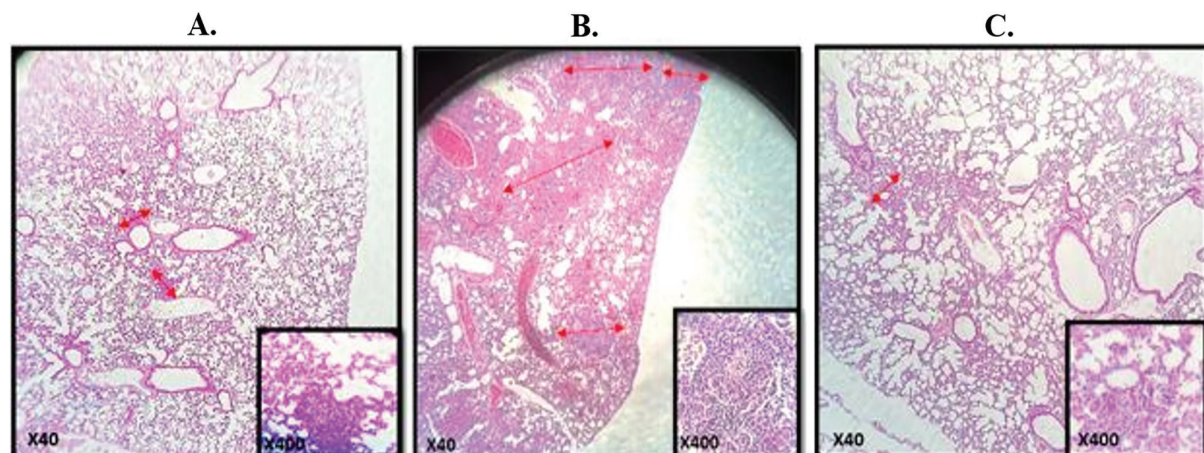
**Fig. 2.** A. Primary tumor masses of I. ABD-rhIL-2, II. rhIL-2 and III. Control. B. Tumor volume was measured every 3 days. Significantly, the control group had larger tumors than the two treated groups. ( $P=0.000$  for rhIL-2 and  $P=0.001$  for ABD-rhIL-2). C. Tumor weight was measured after isolation of mice on day 28. There is a remarkable difference between the treatment groups ( $P=0.000$  for both) compared to the control group.

#### *Metastasis Inhibition of rhIL-2 and ABD-rhIL-2*

In the control group, numerous large metastatic nodules (6-7 mm) and neoplastic cell infiltration were observed in the lung parenchyma. However, in the rhIL-2 and ABD-rhIL-2 treatment groups, only small metastatic nodules (1-2 mm) and a maximum of two nodules were present. In the control group, more than 90% of the alveoli were filled with RBC and fibrin secretions and the majority of the bronchioles were also filled with RBC and dead cells. In the rhIL-2 and ABD-rhIL-2 treatment groups, less than 20% of alveoli were filled with RBC and fibrin secretions and the majority of the bronchioles appeared normal.



**Fig. 3.** The number and size of micro metastatic nodules in 200-micrometer-thick lung tissue. The average numbers and sizes of nodules were significantly lower in the treated groups in compared to in the control group ( $P=0.000$  for both).



**Fig. 4.** The H & E staining of lung tissues obtained from mice in different groups. A. Control, B. rhIL-2 and C. ABD-rhIL-2. In the control group the alveolar space in the lung tissues is filled with infiltrated cells and fluid. However in both treated groups the alveolar space is empty. The size of the nodules is indicated by the arrow.

These results suggest that rhIL-2 and ABD-rhIL-2 significantly inhibit metastasis to the lungs (Figs. 3 and 4).

## DISCUSSION

Interleukin-2 is a key player in cancer immunotherapy (23). The commercial form, Proleukin, has been approved for the treatment of metastatic melanoma and renal cell carcinoma (24). The primary effect of using rhIL-2 in immunotherapy is the stimulation of cytotoxic T cells and T regulatory cells due to their high affinity IL-2 receptor. Consequently, the drug is administered in high doses. Common adverse effects of high doses of rhIL-2 include a hypovolemic state, vascular leak syndrome, and fluid accumulation in the extravascular space (25). Various methods exist to extend the half-life of therapeutic proteins, such as linking the protein to the Fc domain of immunoglobulin G, using polyethylene glycol (PEG), and albumin (26). Attaching PEG polymer to interleukin 2 increases the cytokine's size and enhances its anti-tumor properties. In a murine sarcoma cancer model, the PEG conjugate of rhIL-2 (NKTR-214) was found to be 60 times more effective than rhIL-2 alone, although the charge of rhIL-2 is altered by PEG modification (27). Repeated injections of pegylated proteins may lead to cytotoxicity and the development of anti-PEG antibodies (28).

Another study found that the combining IL-2 with human serum albumin (Albuleukin) suppressed renal tumor growth, resulting in decreased tumor size and fewer metastatic liver nodules in a mouse model of melanoma. Nevertheless, further investigations are required to evaluate the potential toxicity of Albuleukin (29). Furthermore, albumin may have a negative impact on the interactions between the therapeutic protein and its target(s) (30). In 2017, Kardar et al. demonstrated that the ABD-rhIL-2 fusion protein had a longer serum half-life in mice (22). Our research suggested the potential

therapeutic use of ABD-rhIL-2 at a lower concentration compared to rhIL-2 in 4T1 mouse breast cancer. The results showed a significant decrease in tumor growth and isolated tumor weight in mice treated with rhIL-2 and ABD-rhIL-2 compared to the control group. Li R et al also demonstrated that hTRAIL fusion ABD resulted in a reduction in tumor size and enhanced tumor growth inhibition in a colon cancer mouse model (19). Furthermore, Hsu et al's study on recombinant human IL-15 fused with ABD showed superior antitumor activity in terms of reducing tumor growth, inhibiting regulatory T lymphocyte accumulation, and increasing the population of TCD8+ and natural killer cells in a colon cancer mouse model (21). Similarly, c-IFN-ABD exhibited the highest efficacy in suppressing tumor growth in BALB/c nude mice with C8161 melanoma (20). Our study presented the first evaluation of the anti-metastatic properties of both ABD-rhIL-2 and rhIL-2. Hematoxylin-eosin (H&E) staining of lung tissues revealed a significantly higher number and size of lung nodules in the control group compared to the ABD-rhIL-2 and rhIL-2 groups, with no significant difference between the two treated groups. These findings were consistent with Liu et al's research on AZD4547, a small molecule inhibitor targeting fibroblast growth factor receptors (FGFRs), which significantly reduced the number of lung metastatic nodules in the 4T1 breast cancer mouse model ( $P < 0.001$ ) (31). Wang et al's study involving Arsenic sulfide ( $As_4S_4$ ) in the 4T1 breast cancer model also demonstrated the absence of obvious lung metastatic nodules in treated mice, showcasing promising results (32).

It is understood that the population of T regulatory cells increases following IL-2 administration. However, the primary objective of inhibiting metastasis was achieved. Notably, ABD-rhIL-2 proved to be a more effective alternative to rhIL-2, capable of inhibiting cancer metastasis at a one-third concentration.

## CONCLUSION

By using ABD-IL-2 at one-third the concentration of IL-2, we aimed to reduce the administration toxicity associated with high doses of IL-2, an FDA-approved drug used in immunotherapy. This approach shows potential for improving IL-2-based treatments while minimizing adverse effects. These promising results serve as a foundation for the potential use of ABD-rhIL-2 in clinical trials for breast cancer immunotherapy.

## ACKNOWLEDGMENT

We would like to express our gratitude to the staff of the Immunology, Asthma and Allergy Research Institute. This study was conducted in accordance with ethical code IR.TUMS.AEC.1401.033 and was supported by grant number 58059 from Tehran University of Medical Sciences, Tehran, Iran.

## AUTHORS' CONTRIBUTION

MT performed the investigation, obtained the experimental data, and wrote the manuscript. AM interpreted the H & E staining data. MY contributed to the analysis and verification of the data. AR contributed to the design of the study and discussed the results. GK conceptualized and designed the study, advised scientifically, verified results, and edited the manuscript.

## CONFLICTS OF INTEREST

The authors declare no conflict of interest.

## REFERENCES

- Majidpoor J, Mortezaee K. Interleukin-2 therapy of cancer-clinical perspectives. *International immunopharmacology*. 2021;**98**:107836.
- Salamanna F, Borsari V, Contartese D, Costa V, Giavaresi G, Fini M. What is the role of interleukins in breast cancer bone metastases? A systematic review of preclinical and clinical evidence. *Cancers*. 2019;**11**(12):2018.
- Zhou J, Zhong Y. Breast cancer immunotherapy. *Cell Mol Immunol*. 2004;**1**(4):247-55.
- Dillman RO. Cancer immunotherapy. *Cancer biotherapy & radiopharmaceuticals*. 2011;**26**(1):1-64.
- Vazquez-Lombardi R, Roome B, Christ D. Molecular engineering of therapeutic cytokines. *Antibodies*. 2013;**2**(3):426-51.
- Holder PG, Lim SA, Huang CS, Sharma P, Dagdas YS, Bulutoglu B, Sockolosky JT. Engineering interferons and interleukins for cancer immunotherapy. *Advanced drug delivery reviews*. 2022;**182**:114112.
- Choudhry H, Helmi N, Abdulaal WH, Zeyadi M, Zamzami MA, Wu W, et al. Prospects of IL-2 in cancer immunotherapy. *BioMed research international*. 2018;**2018**.
- Boyman O, Surh CD, Sprent J. Potential use of IL-2/anti-IL-2 antibody immune complexes for the treatment of cancer and autoimmune disease. *Expert opinion on biological therapy*. 2006;**6**(12):1323-31.
- Atkins MB, Lotze MT, Dutcher JP, Fisher RI, Weiss G, Margolin K, et al. High-dose recombinant interleukin 2 therapy for patients with metastatic melanoma: analysis of 270 patients treated between 1985 and 1993. *Journal of clinical oncology*. 1999;**17**(7):2105-.
- Tang A, Harding F. The challenges and molecular approaches surrounding interleukin-2-based therapeutics in cancer. *Cytokine: X*. 2019;**1**(1):100001.
- Chulpanova DS, Kitaeva KV, Green AR, Rizvanov AA, Solovyeva VV. Molecular aspects and future perspectives of cytokine-based anti-cancer immunotherapy. *Frontiers in cell and developmental biology*. 2020;**8**:402.
- Jiang T, Zhou C, Ren S. Role of IL-2 in cancer immunotherapy. *Oncoimmunology*. 2016;**5**(6):e1163462.
- Kraulis PJ, Jonasson P, Nygren P-Å, Uhlén M, Jendeborg L, Nilsson B, Kördel J. The serum albumin-binding domain of streptococcal protein G is a three-helical bundle: a heteronuclear NMR study. *FEBS letters*. 1996;**378**(2):190-4.
- Nilvebrant J, Hober S. The albumin-binding domain as a scaffold for protein engineering. *Computational and structural biotechnology journal*. 2013;**6**(7):e201303009.
- Johansson MU, Frick I-M, Nilsson H, Kraulis PJ, Hober S, Jonasson P, et al. Structure, specificity, and mode of interaction for bacterial

- albumin-binding modules. *Journal of Biological Chemistry*. 2002;**277**(10):8114-20.
16. Frejd FY. Half-Life Extension by Binding to Albumin through an Albumin Binding Domain. *Therapeutic Proteins: Strategies to Modulate Their Plasma Half-Lives*. 2012:269-83.
  17. Nygren P. In vivo stabilization of a human recombinant CD4 derivative by fusion to a serum albumin-binding receptor. *Vaccines 91, Modern Approaches to Vaccine Development*. 1991:363-8.
  18. Nikravesh FY, Shirkhani S, Bayat E, Talebkhan Y, Mirabzadeh E, Sabzalinejad M, et al. Extension of human GCSF serum half-life by the fusion of albumin binding domain. *Scientific Reports*. 2022;**12**(1):667.
  19. Li R, Yang H, Jia D, Nie Q, Cai H, Fan Q, et al. Fusion to an albumin-binding domain with a high affinity for albumin extends the circulatory half-life and enhances the in vivo antitumor effects of human TRAIL. *Journal of Controlled Release*. 2016;**228**:96-106.
  20. Guo J, Sun J, Liu X, Wang Z, Gao W. Head-to-tail macrocyclization of albumin-binding domain fused interferon alpha improves the stability, activity, tumor penetration, and pharmacology. *Biomaterials*. 2020;**250**:120073.
  21. Hsu F-T, Liu Y-C, Tsai C-L, Yueh P-F, Chang C-H, Lan K-L. Preclinical evaluation of recombinant human IL15 protein fused with albumin binding domain on anti-PD-L1 immunotherapy efficiency and anti-tumor immunity in colon cancer and melanoma. *Cancers*. 2021;**13**(8):1789.
  22. Adabi E, Saebi F, Hasan-Abad AM, Teimoori-Toolabi L, Kardar GA. Evaluation of an albumin-binding domain protein fused to recombinant human IL-2 and its effects on the bioactivity and serum half-life of the cytokine. *Iranian biomedical journal*. 2017;**21**(2):77.
  23. Mortara L, Balza E, Bruno A, Poggi A, Orecchia P, Carnemolla B. Anti-cancer therapies employing IL-2 cytokine tumor targeting: contribution of innate, adaptive and immunosuppressive cells in the anti-tumor efficacy. *Frontiers in Immunology*. 2018;**9**:2905.
  24. Yao Z, Dai W, Perry J, Brechbiel MW, Sung C. Effect of albumin fusion on the biodistribution of interleukin-2. *Cancer Immunology, Immunotherapy*. 2004;**53**:404-10.
  25. Schwartz RN, Stover L, Dutcher JP. Managing toxicities of high-dose interleukin-2. *Oncology (Williston Park, NY)*. 2002;**16**(11 Suppl 13):11-20.
  26. Berraondo P, Sanmamed MF, Ochoa MC, Etxeberria I, Aznar MA, Pérez-Gracia JL, et al. Cytokines in clinical cancer immunotherapy. *British journal of cancer*. 2019;**120**(1):6-15.
  27. Knauf MJ, Bell DP, Hirtzer P, Luo Z-P, Young JD, Katre NV. Relationship of effective molecular size to systemic clearance in rats of recombinant interleukin-2 chemically modified with water-soluble polymers. *Journal of Biological Chemistry*. 1988;**263**(29):15064-70.
  28. Ibrahim M, Ramadan E, Elsadek NE, Emam SE, Shimizu T, Ando H, et al. Polyethylene glycol (PEG): The nature, immunogenicity, and role in the hypersensitivity of PEGylated products. *Journal of Controlled Release*. 2022;**351**:215-30.
  29. Melder RJ, Osborn BL, Riccobene T, Kanakaraj P, Wei P, Chen G, et al. Pharmacokinetics and in vitro and in vivo anti-tumor response of an interleukin-2-human serum albumin fusion protein in mice. *Cancer immunology, immunotherapy*. 2005;**54**:535-47.
  30. Metzner HJ, Weimer T, Schulte S. Half-Life Extension by Fusion to Recombinant Albumin. *Therapeutic Proteins: Strategies to Modulate Their Plasma Half-Lives*. 2012:223-47.
  31. Liu L, Ye TH, Han YP, Song H, Zhang YK, Xia Y, et al. Reductions in myeloid-derived suppressor cells and lung metastases using AZD4547 treatment of a metastatic murine breast tumor model. *Cellular Physiology and Biochemistry*. 2014;**33**(3):633-45.
  32. Wang T, Meng J, Wang C, Wen T, Jia M, Ge Y, et al. Inhibition of murine breast cancer metastases by hydrophilic As4S4 nanoparticles is associated with decreased ROS and HIF-1 $\alpha$  downregulation. *Frontiers in Oncology*. 2019;**9**:333.