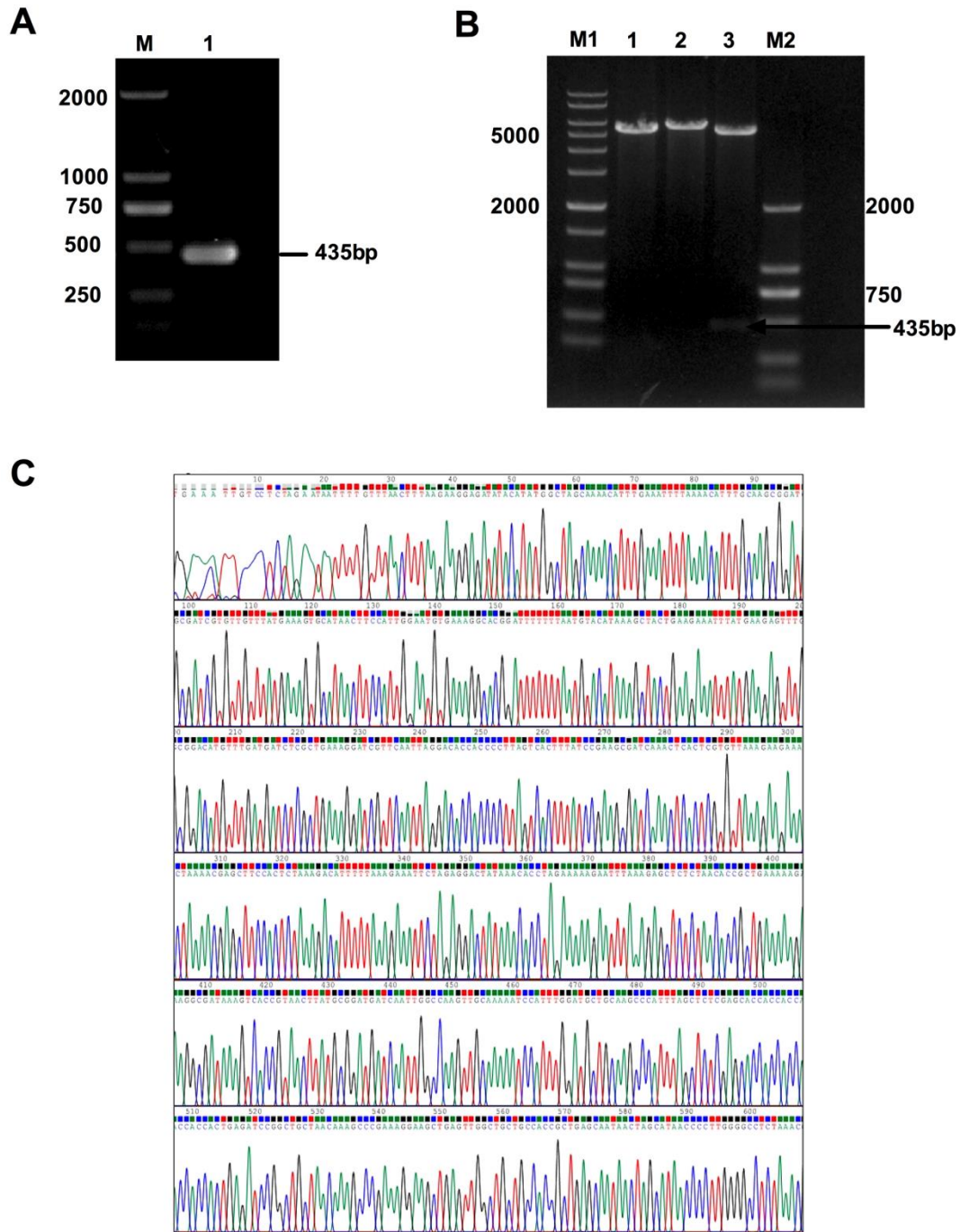
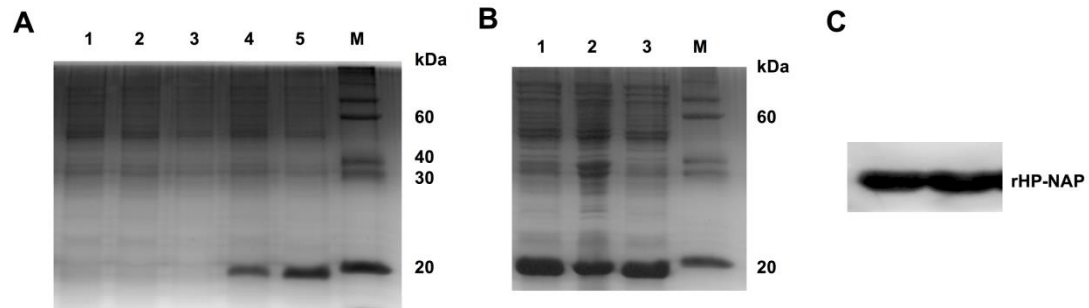


## Supplementary Figure



**Suppl. Figure 1. Construction of recombinant plasmid pET-24b-napA.** (A) HP-NAP gene amplified from recombinant plasmid pET-24b-napA. M: 2000bp DNA ladder; Lane1:the target gene (435bp). (B) Restriction analysis of pET-24b-napA. M1: 1Kbp DNA ladder; Lane1: pET-24b digested by Nhe I; Lane2: pET-24b-napA digested by Nhe I; Lane 3: pET-24b-napA digested by Nhe I and Xho I; M2: 2000bp DNA ladder. (C) The sequencing result of HP-NAP in pET-24b-napA.



**Suppl. Figure 2. rHP-NAP expression, purification and identification.** (A) Inducible expression of rHP-NAP. Lane 1: *E. coli* BL21; Lane2: *E. coli* BL21 with pET-24b; Lane3: *E. coli* BL21 with pET-24b induced by IPTG; Lane 4: *E. coli* BL21 with pET-24b-napA; Lane 5: *E. coli* BL21 with pET-24b-napA induced by IPTG; M: protein marker. (B) Solubility analysis of rHP-NAP. Lane1: the sonicated *E. coli* BL21 with pET-24b-napA; Lane2: the sonicated thallus of *E. coli* BL21 with pET-24b-napA; Lane3: the sonicated supernatant of *E. coli* BL21 with pET-24b-napA; M: protein marker; (C) Purification and identification of rHP-NAP. Western blotting of purified rHP-NAP with anti-his antibody.